

Who is CPS Energy?

Established in 1860, we are the nation's largest public power, natural gas and electric company, providing safe, reliable, and competitively-priced service to **840,750** electric and **352,585** natural gas customers in San Antonio and portions of seven adjoining counties. Our customers' combined energy bills rank among the lowest of the nation's 20 largest cities – while generating **\$7 billion** in revenue for the City of San Antonio for more than seven decades.

As a trusted and strong Community partner, we continuously focus on job creation, economic development and educational investment. True to our **People First** philosophy, we are powered by our skilled workforce, whose commitment to the community is demonstrated through our employees' volunteerism in giving back to our city and programs aimed at bringing value to our customers.

We are among the top public power wind energy buyers in the nation and number one in Texas for solar generation. For more information, visit cpsenergy.com.

How can you follow the progress of this project?

The CPS Energy project team will post project information on the CPS Energy website at www.cpsenergy.com.
(search: Rafter)

Who can answer your questions?

The website will include regular updates on the project as steps are completed. Also, you may call, write or e-mail to:

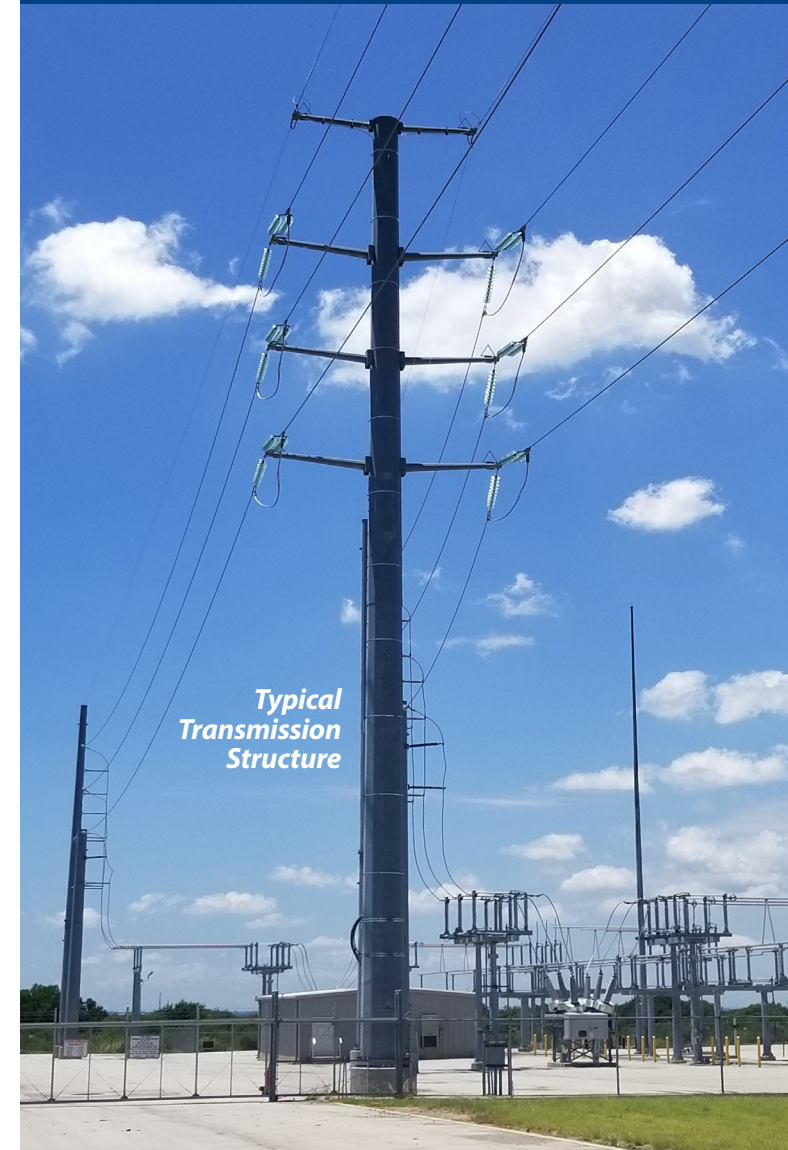
CPS Energy

Daniel Otto, Project Manager
Rafter Phase 2
Transmission Line Project
Mail Code 100311
P.O. Box 1771
San Antonio, Texas 78296-1771
(210) 353-4852
dtotto@cpsenergy.com



RAFTER PHASE 2

TRANSMISSION LINE PROJECT



INFORMATION ABOUT THE RAFTER PHASE 2 TRANSMISSION LINE PROJECT

What is the Rafter Phase 2 Transmission Line Project?

This project is to construct a six mile, high voltage transmission (power) line between our Cagnon and Rafter Substations. Our contractor, Southeast Power Corporation, will install new poles, foundations and all associated hardware for this project.

*Construction scheduled to begin December 2019.
Scheduled completion date is April 2020.*

How might this project affect you?

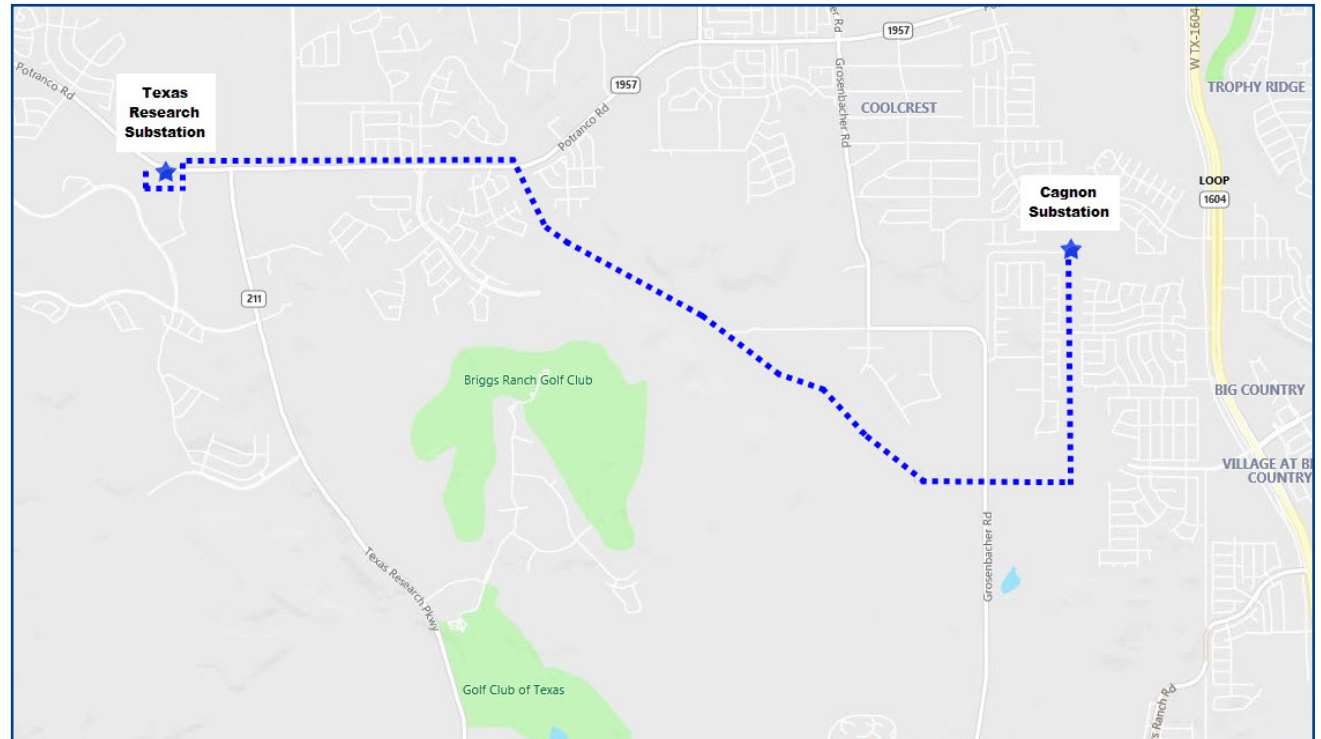
Our contractor will work to minimize impact to area residents. Construction activities will be focused around the existing transmission line route shown on the Project Location Map.

Activities that may be typical during the construction project are the presence of construction equipment and materials as well as temporary partial road closures while construction is in progress.

The construction work should have no impact on your electric service.

Why is this project needed?

Maintaining our customers' need for reliable electric power is of utmost importance. The project will help ensure electric reliability of the area is maintained. It will also help meet the growing electric capacity needs of surrounding homes and businesses.



Project Location Map

Please note: A helicopter may be flown during the project to minimize ground disturbance and expedite the work.

Example of a Transmission Line Structure.



Solid Pole Structure